

# TERRASSEN-RANDY

---

Operating instruction

**Decking Edger**

**Type : TR 383/11**

- Description
- Safety advices
- Instruction
- Fault finding
- Spare part view
- Declaration of conformity

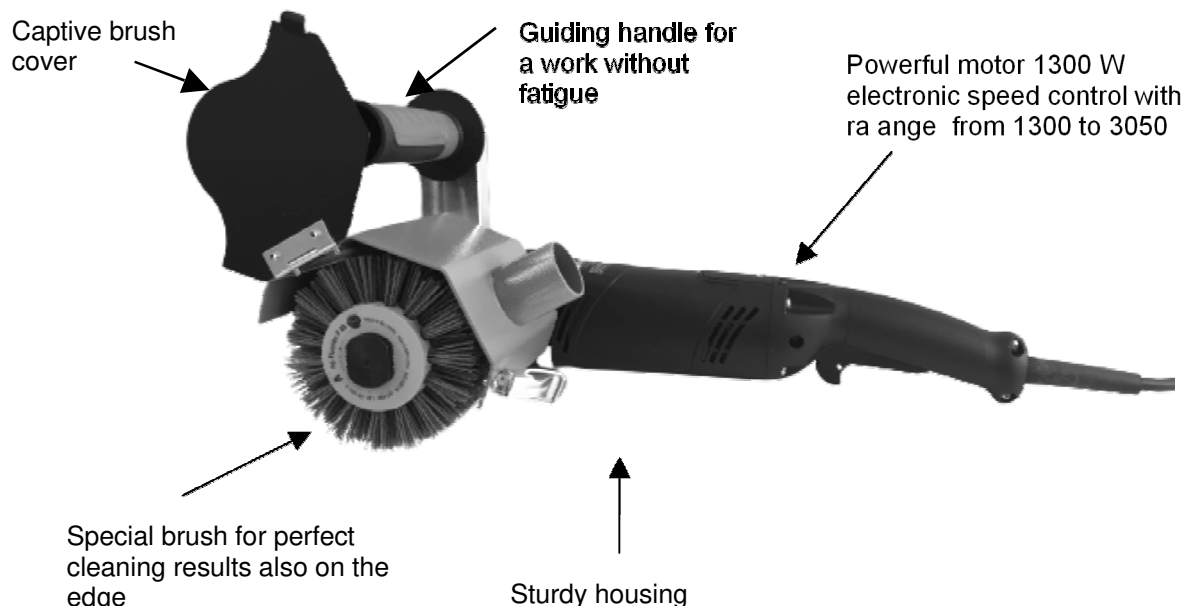


Images and technical dates are not contractual.  
Modifications reserved.



## ***Powerful decking cleaning with a high performant cleaning device***

You have taken the right decision to buy the FG TERRASSEN - RANDY. Your new decking edger is powerful, ergonomic and has a low weight, therefore it allows a work without fatigue also on big surfaces. It cleans up the edges after having cleaned the surface with the FG TERRASSEN - BLITZ. The optional connection to a vacuum cleaner allows working with a reduced level of dust protection, most important, because the dust of many tropical woods traditionally used for decking often is cancerogenous.



## **Technical dates**

Tension / Frequency:	230 V / 50-60 Hz
Nominal current:	5,7 A
Nominal power absorption:	1300 W
Service mode:	S1 (Permanent duty)
Protection class:	II
Speed Brush:	1300 – 3050 1/min
Ø Brush:	80 - 120 mm
Brush largeness:	100 mm
Weight:	4,5 kg

## **Delivery**

- 1 TERRASSEN - RANDY incl. 1 cleaning brush
- 1 Special key SW 24
- 1 Open-end wrench 18
- 1 Angular key SK 5
- 1 Operation instruction + Warranty card

Read this operating manual carefully before starting work !

## Safety advices

Using the FG TERRASSEN-RANDY national prescriptions for the protection against electrical hazards, injuries and inflammations are to be observed !

**1. Keep your working place in order !** Disorder increases the risk of incidents!

**2. Take work area into consideration.**

Do not expose the TERRASSEN-RANDY to rain. Do not use the TERRASSEN-RANDY in dampy or wet surroundings. Ensure good lighting conditions. Do not use the TERRASSEN-RANDY in the vicinity of flammable liquids or gases.

**3. Keep other people, especially children away from work area.**

Provide, that children do not touch the machine and the electrical lead.

**4. Protect yourself against electric shock**

Avoid physical contact with earthed objects, for example pipes, radiators, ovens, refrigerators. For additional protection we recommend the use of a personal protector plug.

**5. Do not overcharge your TERRASSEN-RANDY!**

You work more successful and safely in the indicated charge range.

**6. Wear a dust mask**

Wear a dust mask at least of class P2 when carrying out tasks that create a lot of dust e.g. when emptying the dust bag. The dust of tropical woods are dangerously carcinogenic, allergenic and irritating.

**7. Wear appropriate clothes!**

Do not wear too wide clothes and use solid shoes.

**8. Ear protector**

It is highly recommended that you wear an ear protector (special accessory) when sanding, due to the high level of noise during sanding operation 85 dB(A).

**9. Employ the TERRASSEN-RANDY only for the intended use.**

**10. Disconnect mains plug**

When assembling or dismantling the machine, when it is not in use, or when carrying out maintenance work e.g. changing the brush drum, you must disconnect the TERRASSEN-RANDY from the mains.

**11. Covers**

The machine shall not be used without the appropriate covers. Do not touch rotating elements.

**12. Do not leave any tools in the machine** Before switching the machine on check that all spanners and adjusting tools have been removed.

**13. Always be alert**

Keep the machine constantly under your observation while you work. Act sensibly. Do not operate the machine if you are unable to concentrate.

**14. Examine your machine for signs of damage**

Before starting work always check carefully that all component parts are in perfect condition to serve their intended purpose. Check that all moving parts are in good working order, that they do not stick and are not damaged. All components must be assembled correctly and meet all requirements in order to guarantee perfect operation of the machine.

**15. Prevent fire hazard**

Always empty the dust bin on finishing work and before leaving the work area. Depose the dust in a safe place.

**16. Reparation should be executed only by an authorized repair service.**

**19. Electrical safety**

The TERRASSEN-RANDY is a device of the protection class 1, that means, that only leads and plugs with an earth conductor may be used. Reparation and replacement of plugs only by a qualified repair service.

**20. Lead**

Only use leads with a sufficient section. The minimal section of the cable is 1,5 mm<sup>2</sup>.

**Warning!**

For your own safety only use equipment and special accessories specified in the operating manual. The use of tools or accessories other than those recommended in the operating manual could mean a risk of personal injury.

## Operating manual

### Use of the machine

Before starting, fit the brush and connect machine to the electric supply. Take care, that the voltage corresponds to the required voltage indicated on the type shield.

#### Before switching on the machine

Make sure, that the brush does not touch the floor!



**Injury hazard! Never switch on the machine without the brush and covers!**

### Switching on and off

#### Short-Time Operation

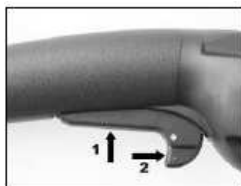
Switching on: press on/off switch (1)

Switching-off: release on/off switch(1)

#### Permanent Operation

Switching on: press on/off switch (1) and, keeping it pressed, engage the lock button (2)

Switching off: press on/off switch (1) and let it go off again



#### ATTENTION!

**In case of every stop of the machine, the lock button (2) has to be released immediately by pressing the on/off switch. Consequently, you can avoid an unintentional restart of the machine (physical hazard).**

The working largeness of the TERRASSEN-RANDY is 100 mm, the max. brush diameter is 120 mm. The axle and the brush drum have double key slots. This allows highest running precision and the lowest possible vibration level.

### Mounting / Dismounting of the lead

The alimentation lead is to be connected with the special clutch: Insert the clutch in the female part on the machine and turn it slightly to get it locked. To dismount it, turn it in the opposite sens to release it.

### FG Special brush drum(Fig. 3)

Only use the FG special brush drum, that allows you cleaning and smoothening in one step. Fibres are cut off and edges are rounded, so you get a perfect surface also for barefoot walking on it.

To fasten the brush, remove the clamping screw, remove the worn brush, place the new brush on the spindle and fasten the clamping screw again. The unit can be locked in place with the SW 18 open-end wrench.

### Speed control (Fig. 1)

The device is equipped with a continuous speed control at the grip, that allows the speed variation from 1300 to 3050 rpm. B - C + D are the ideal speed range, that gives clean and shade-free surfaces. In the case of particular dirty surfaces, the speed can be risen. Please note, that a higher speed level conditions more brush consumption and the risk of burning the wood.

- Hard and tropical woods max. level D
- Pinewoods max. level G

### Dust suction

At the brush cover you find a conical tube Ø 37mm for the connection to a vacuum cleaner in order to permit a low level of dust production while sanding.



#### Danger of fire hazard!

Dust tends to auto-inflammation. Always empty the bin and stock the dust in a fire proof place!

### Instruction of use

Pass the device with moderate pression ahead and back on the surface. With every passage, you should move the machine sideways from the left to the right side. The so achieved oscillation effect gives a homogenous surface without level differences. A too high speed level and brushing too long on one place can cause heat production and burned spots. Moose and other plants should be removed before starting work.

#### • Coal brush replacement (Fig. 2)

- Switch off the machine and unplug it
- Loosen the screws (Pos. 149) and remove the service cover.
- Disconnect braid , remove coal brush clean coal holders
- Insert Original-FG-coal brushes (they may not stick in the coal holder)
- Re-insert pression springs
- Replace cover and tighten screws

The air conduction slots allow on observation of the coal brush fire. In the case of an important fire, switch off immediately the machine and review it.

## Fault finding and repairing

If against all probability, faults should appear, here is how to find and eliminate them:

<b>Fault</b>	<b>Possible reason</b>	<b>Reparation</b>
<b>Motor does not start</b>	No current	Check alimentation
	Used coal brushes	Replace coal brushes (see ill.)
<b>Weak dust suction</b>	Suction pipe is blocked	Clean pipe

In the case, that the indicated repairing proposals should not resolve the problem, please contact our service office:

Tel.: (Mo – Fr 7<sup>00</sup> to 17<sup>00</sup> Uhr): **03594 / 7792600** or e-Mail: **info@fg-online.net**

## Figures



Fig. 1: Speed control



Fig. 2: Coal brush replacement



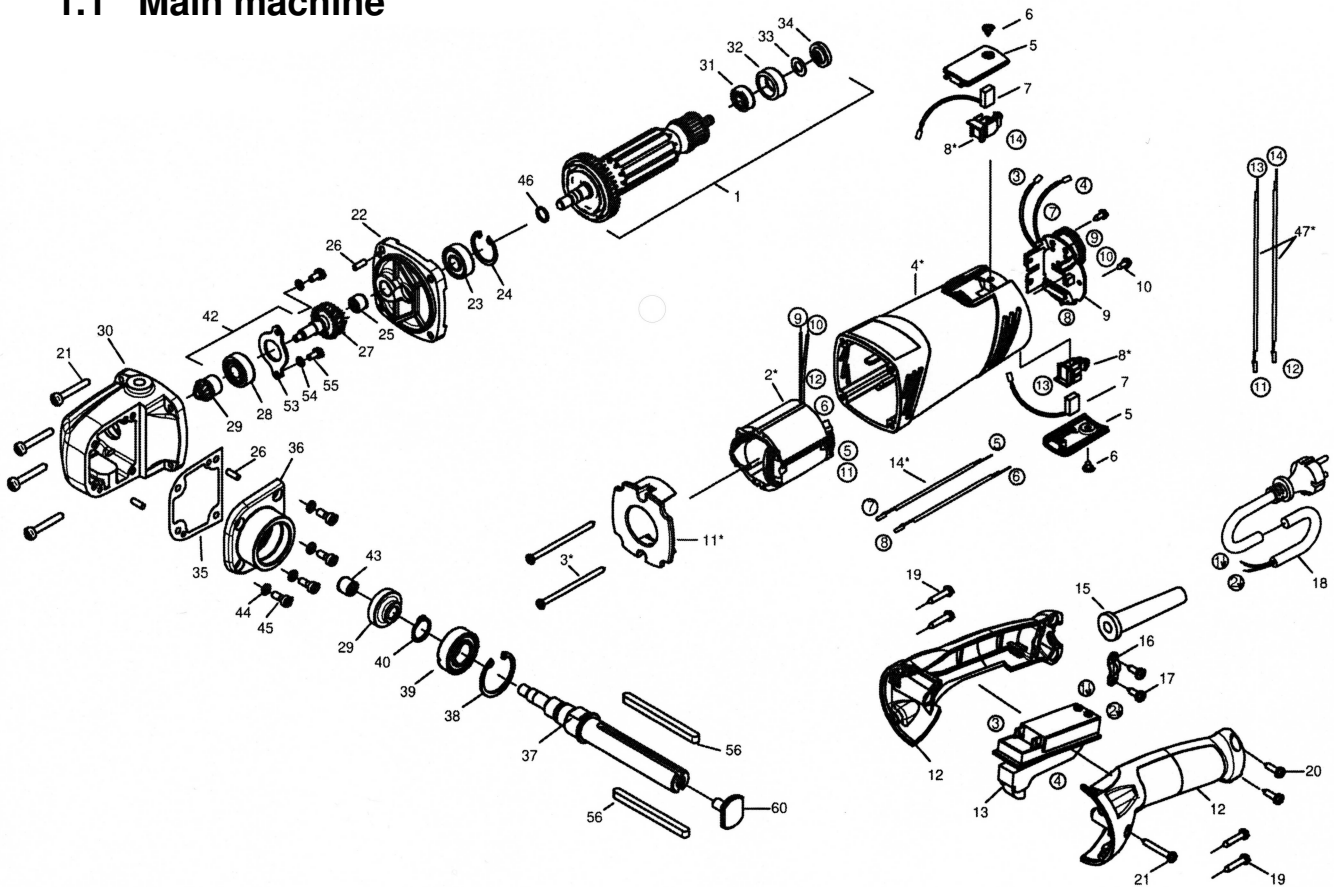
Fig. 3: Brush drum replacement

## Operation

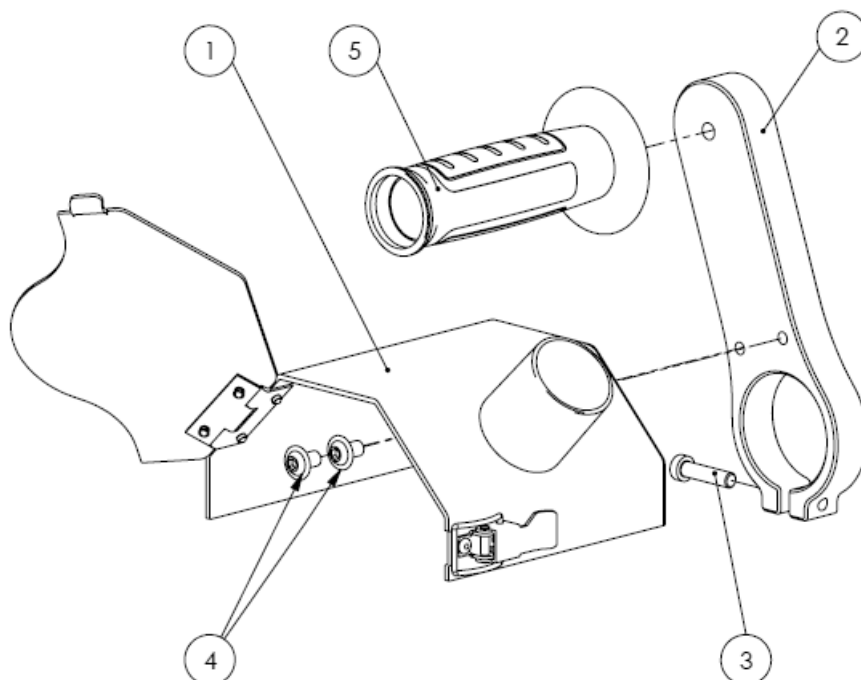


## Spare parts overview

### 1.1 Main machine



### 1.2 Suction hood



## Spare parts list

### 1.1 Main machine

Pos.	Code	Description	Qty.
	7570C204	Motor housing, compl. 230V	1
1	7551N100	Rotor, compl. 230 V	1
2	75412150	Stator, kpl. 230 V	1
3	80201265	Screw	2
4	80900175	Motor housing	1
5	80900405	Brush cover	2
6	80201264	Screw	2
7	109531	Carbon brush	2
8	80204500	Brush holder	2
9	109532	Printed circuit board	1
10	80201109	Screw	2
11	80900174	Air guiding ring	1
12	80900179	Handle caps	1
13	80600148	Switch	1
14	80600244	Connecting wire	2
15	83000004	Cable grommet	1
16	85000020	Wire locking flange	1
17	80201270	Screw	2
18	109533	Connecting cable, 5m	1
19	80201272	Screw	4
20	80201271	Screw	2
21	80201179	Screw	5
22	7551Q610	End shield og gearing	1
23	80410029	Grooved ball bearing	1
24	80201329	Retaining ring	1
25	80420105	Needle sleeve	1
26	80200581	Grooved pin	3
27	75704490	Intermediate shaft	1
28	80410021	Grooved ball bearing	1
29	85000301	Bevel pinion + Bevel gear	1
30	75411400	Gear box housing	1
31	80410027	Grooved ball bearing	1
32	83000204	Bearing cap	1
33	82000951	Fibre washer	1
34	80701005	Magnetic ring	1
35	82000063	Adjusting foil	1
36	75410405	Gearbox cover	1
37	75410420	Work spindle	1
38	80201334	Retaining ring	1
39	80410043	Grooved ball bearing	1
40	80201323	Retaining ring	1
41	7551N125	Spacer	1
42	7570449U	Intermediate shaft compl.	1
43	80420110	Needle sleeve	1
44	80201302	Spring lock washer	4
45	80201230	Screw	4
46	80200742	Circlip	1
47	80600249	Connecting wire	2
53	75519410	Holding panel	1
54	80200752	Tooth lock washer	2
55	80201201	Screw	2
56	80200623	Parallel key	2
60	106310	Locking screw	1

### 1.2 Suction hood

Pos.	Code	Description	Qty.
1	383-1110-00	Tin cap compl.	1
2	383-1100-01	Holder	1
3	103004	Screw	1
4	103961	Screw	2
5	109473	Hand grip	1

## Code

### Brushes + Tools

Artikelnr.	Bezeichnung
383 4000 04 00	Brush P46
383 4000 01 00	Brush P60
383 4000 02 00	Brush P80
383-4000-05	Open-end wrench SW18
383 4000 03 00	Special key
100848	Angular key 5mm



FG Maschinenbau GmbH

FG FLOORTEC

Neustädter Str. 5a

**01877 Bischofswerda**

Tel. +49(0)3594 7792600

Fax +49(0)3594 7792601

Declaration of EU Conformity  
in accordance to the CE machinery directive 2006/42/EG, annexe II A

We herewith declare, that the floor cleaning machine designed as follows

Item name: **Decking edger TERRASSEN-RANDY**

Type: **TR 383/11**

Serial-Nr.: 2023

corresponds to the following prescriptions:

EG-Directives: EG-Machinery directive 2006/42/EG EM Directive  
(2004/108/EG)

Applicated harmonized prescriptions, published in the Official Journal of the EU <sup>1</sup> :

EN ISO 12100, EN ISO 13857, DIN EN 349-Ed.2008

The responsible for the composition of the technical documentations: Friedrich Kirchner

Bischofswerda, 01.01.2023



Informations to the undersigner: Friedrich Kirchner, Managing Director

<sup>1</sup> This statement is rendered void if the machine is altered without our consent.

